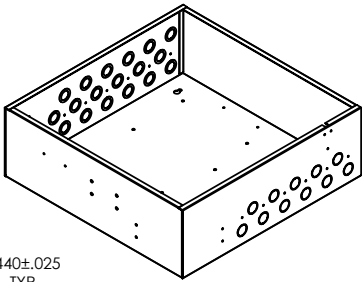
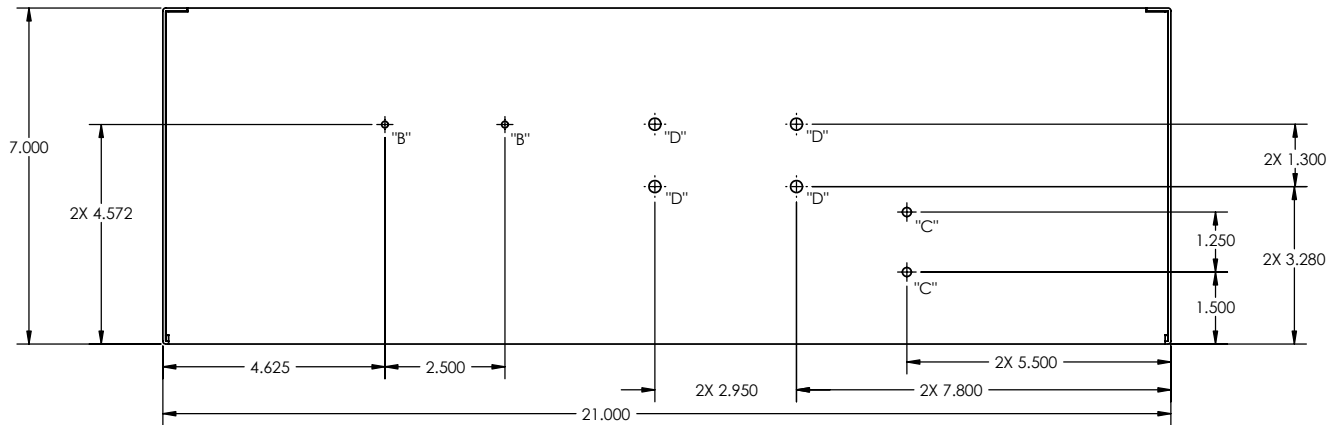
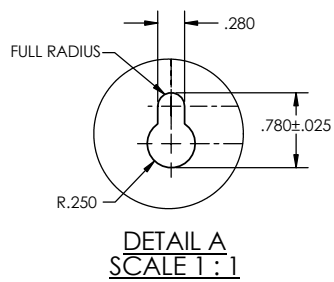
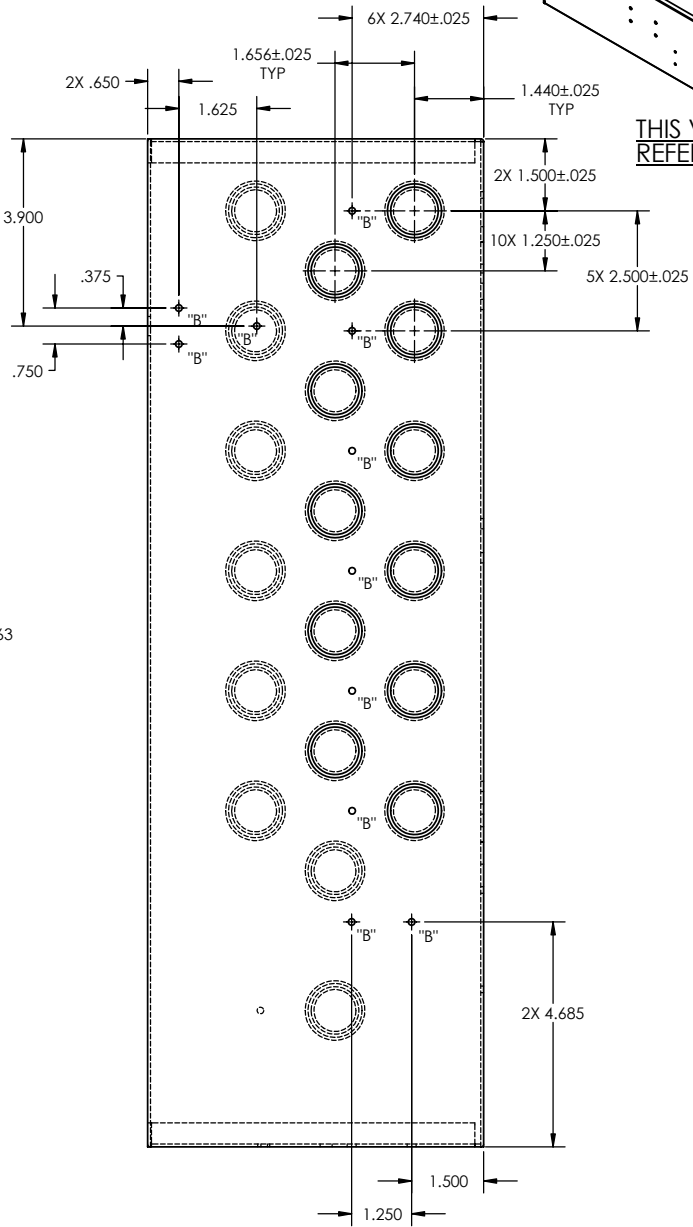
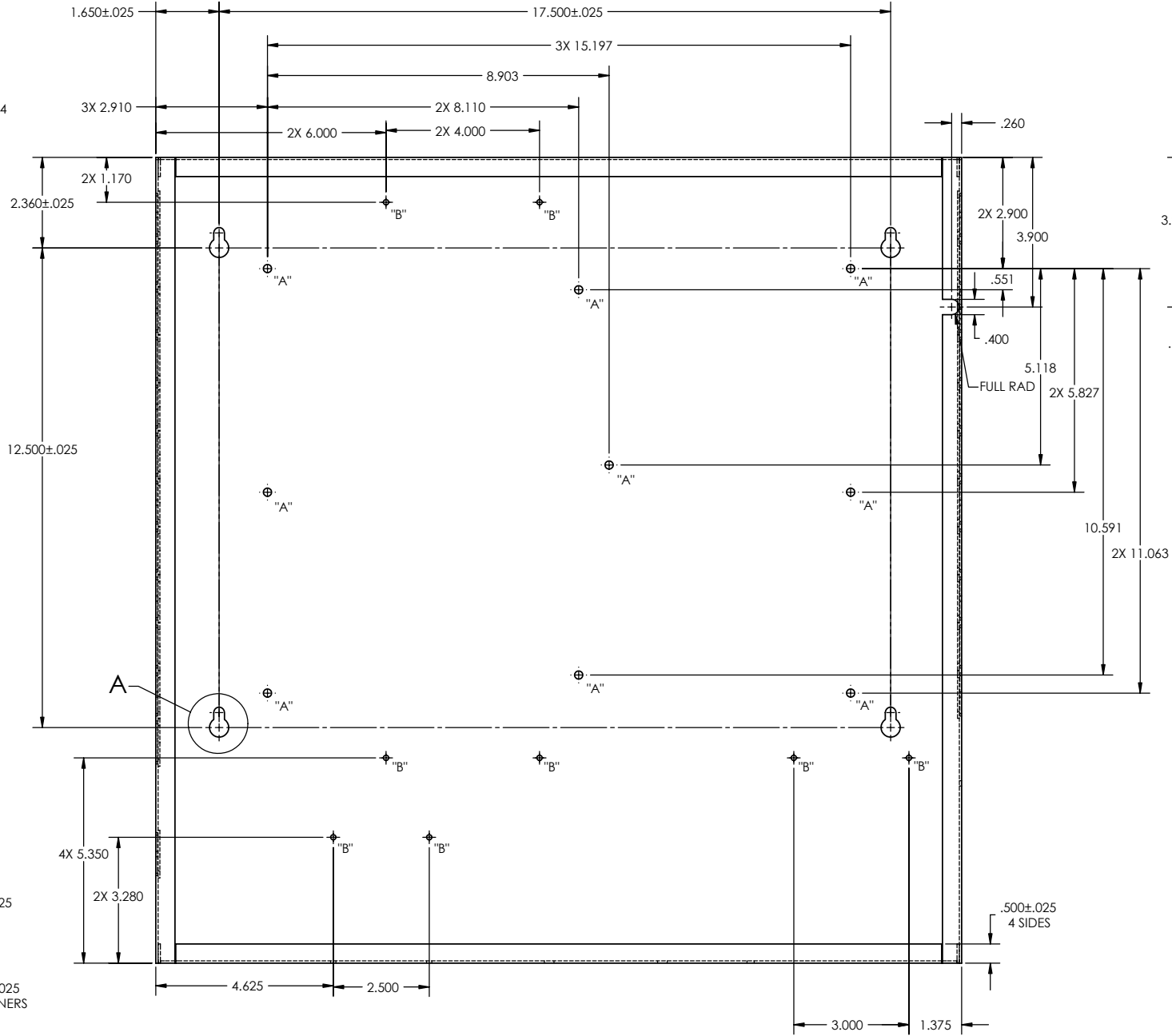
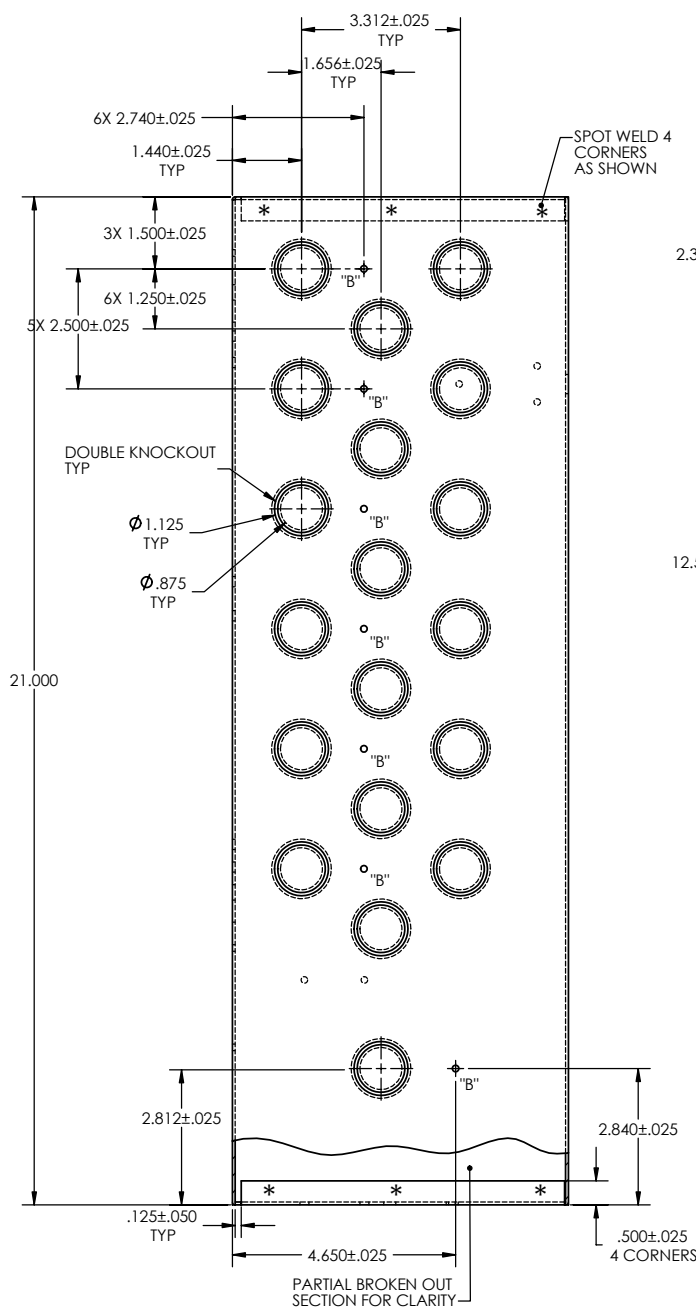


NOTES UNLESS OTHERWISE SPECIFIED:  
1. INTERPRET DRAWING PER ASME Y14.5M-1994  
2. MATERIAL: CRS 10-008 OR 1010, 16 GAGE (.059) THICK  
3. REFERENCE ASSY DWG H334 (05310)  
4. REMOVE ALL BURRS AND SHARP EDGES  
5. MINIMUM BEND RADII & RELIEF

REVISIONS					
REV	DESCRIPTION	ECN #	DRWN	APPVD	DATE
A	RELEASE FOR PRODUCTION	11742	RJ	AS	5/5/04




THIS VIEW FOR  
REFERENCE ONLY



D	Ø .250 +.003/-0.000	4
C	Ø .187 +.003/-0.000	2
B	Ø .137 +.003/-0.000	28
A	Ø .213 +.003/-0.000	9
SYM	HOLE DIAMETER	QTY

HOLE CHART

APPROVALS		DATE		<div> <b>NAPCO SECURITY SYSTEMS INC.</b> DIVISION OF NAPCO SECURITY GROUP, AMITYVILLE, N.Y. <small>NAPCO THIS DRAWING CONTAINS CONFIDENTIAL INFORMATION WHICH SHALL NOT BE DISCLOSED WITHOUT THE PRIOR WRITTEN CONSENT OF NAPCO SECURITY GROUP</small></div>							
DRAWN: RJ		5/15/03									
CHECKED:				TITLE  <b>BASE, HOUSING - SUPERTERM TURBO</b>							
APPROVED AS		5/5/04									
UNLESS OTHERWISE SPECIFIED DIMENSIONS ARE IN INCHES.				SIZE <b>D</b>		PART NO. <b>HW1156</b>		DRAWING NO. <b>05756</b>		REV: <b>A</b>	
TOLERANCES: FRACTIONS DECIMALS ANGLES XXX ± .010 ± 1°				SCALE: 1/2 SHEET 1 OF 1							